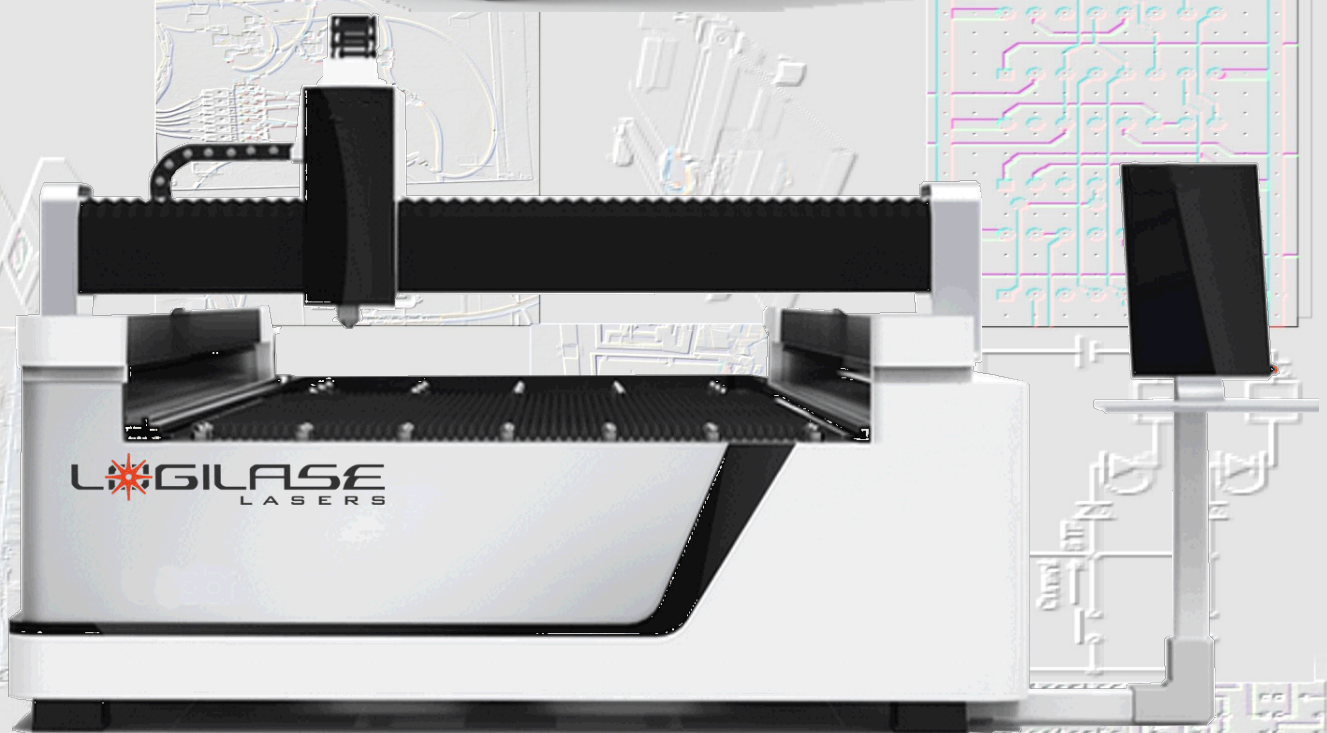


LOGILASE FL

**LOGILASE**  
LASERS

# LOGILASE MAXIMA FBE

EXTENDED FLAT BED FIBER LASER METAL CUTTING MACHINE



CE  
FDA

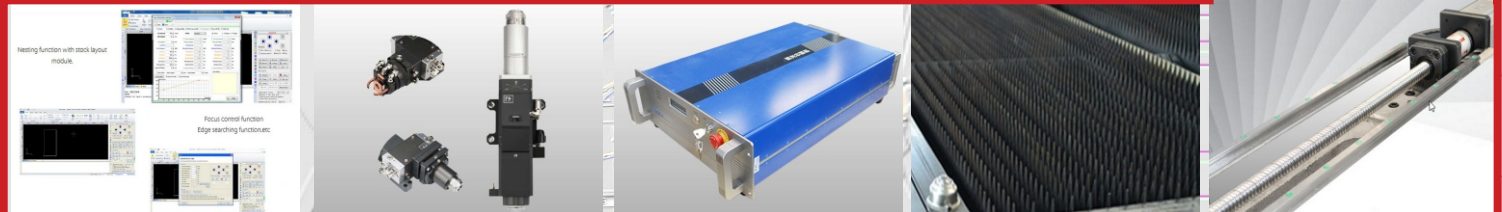
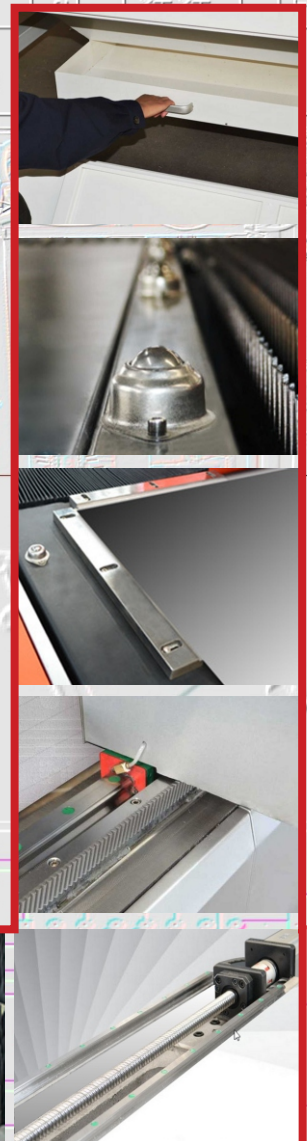
**LOGI MAT ION**  
TECHNOLOGIES, INC.

# LOGILASE MAXIMA FBE

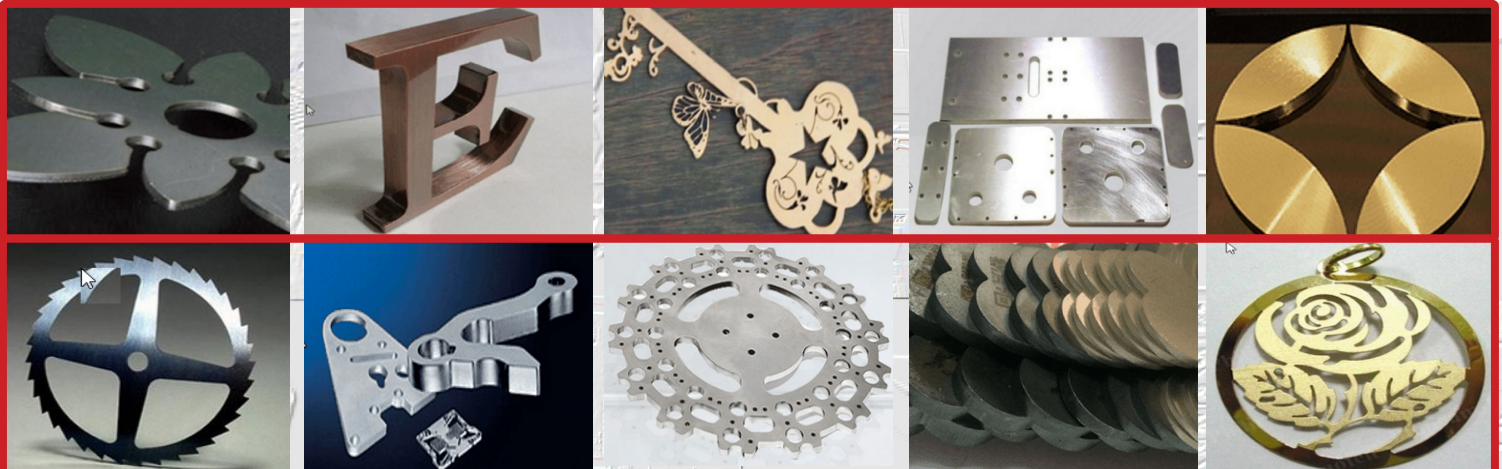
Extended Auto Exchange Flat Bed-Fiber Laser Metal Cutting Machine

## SPECIFICATION

Model	MAXIMA FBE 1530
Working Area	1500*3000mm (59"x118")
Laser Power	500-2000 W
Laser Type	100,000 Hours Life span Air/ Water cooled Fiber Laser,1060 nm
Laser Head	RAYTOOLS with automatic real time distance adjustment
Processing Speed	0-400 mm/s
Feed through	Front & Back Max Thickness 50 mm (2')
Communication (File Transfer)	USB, Ethernet
Min. Cutting Kerf	0.1 mm
Cutting Depth	0.2 - 20 mm
Positioning	±0.04mm Accuracy with Beam Combiner Red Dot Positioning System
Controlling Software	CypCut with Nesting Function, Focus control & Edge search Function (Win XP/7/8/10 Compatible) with Power Interruption Restore Function
Compatible Graphic Format	DXF, PLT, BMP, DWG, AI
Compatible Software	CORELDRAW, AUTOCAD
Table	Fixed Bed with Extended Auto Exchangeable Aluminum blade Table Top
Drive System	High-precision Servo Motor with Ball Screw
Standard Accessories	450 CFM Exhaust Fan, Water Chiller unit, CypCut software and drivers, Operation & Maintenance Manual, Tutorial Videos
Power Supply	230V, 3 Phase 60HZ OR 380V, 3 phase 50 HZ
Operating Condition	Temperature:10-40 ℃, Humidity: 5-95%
Applicable materials	Stainless Steel, Carbon Steel, Brass, Copper, Aluminum, Gold, Silver, Titanium



## SAMPLES



LOGILASE TECHNOLOGIES, INC.

114 Bowes Road, Unit#11, Concord, ON, L4K 1J8, Tel: 416 804 7870, Toll free/Fax: 1 888 686 7485, email: [info@logilase.com](mailto:info@logilase.com)

[www.logilase.com](http://www.logilase.com)