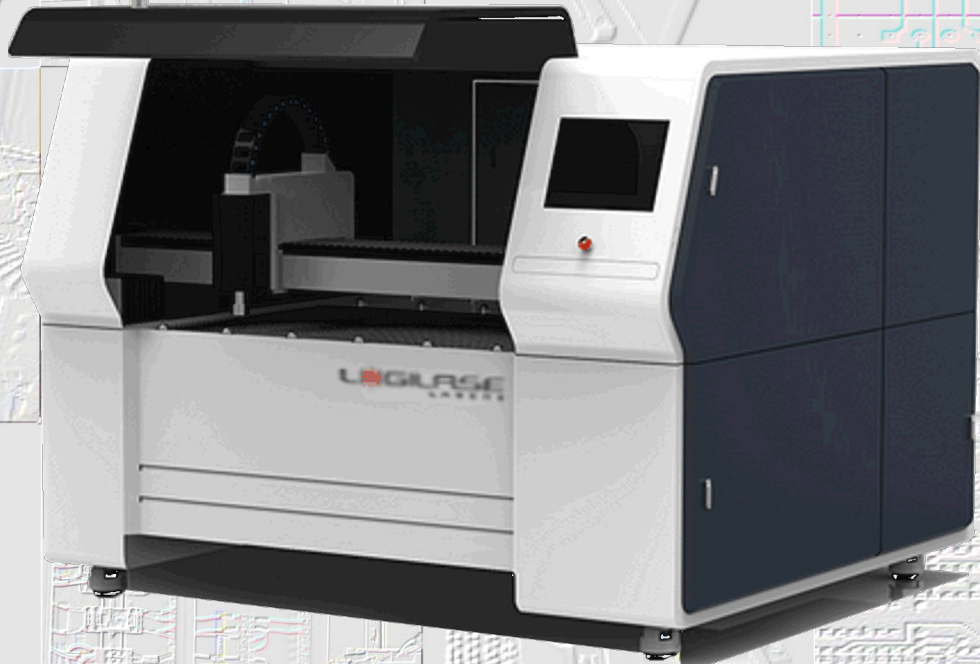
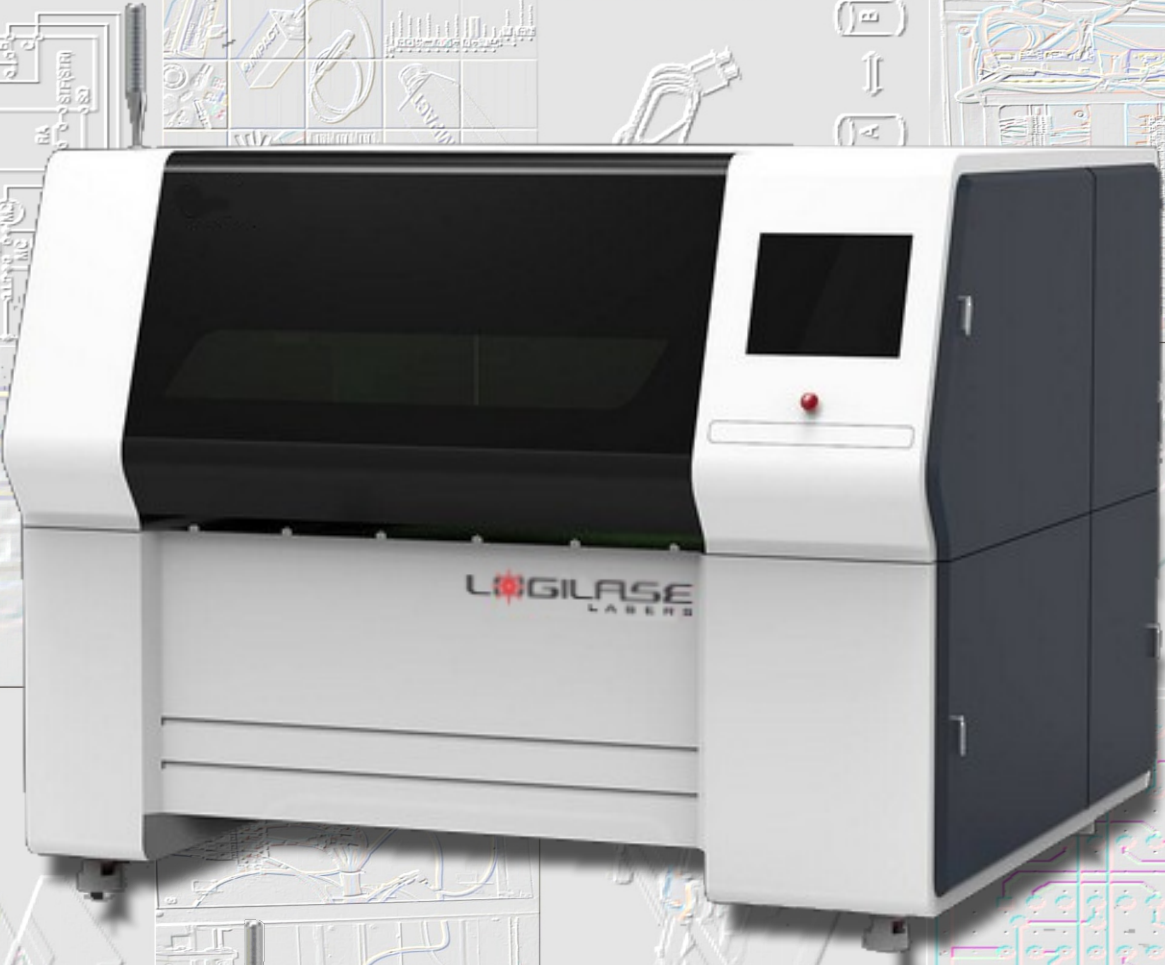


LOGILASE FI

**LOGILASE**  
LASERS

**LOGILASE OPTIMA XFC**

**COVERED FIBER LASER METAL CUTTING MACHINE**



**CE**  
**FDA**

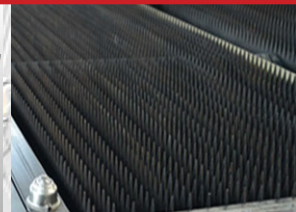
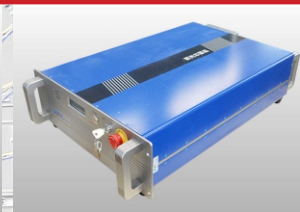
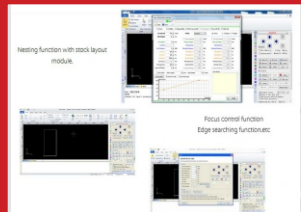
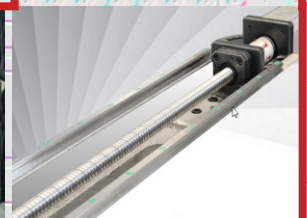
**LOGI MAT ION**  
TECHNOLOGIES, INC.

# LOGILASE OPTIMA XFC

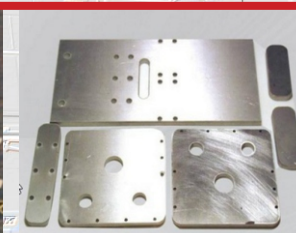
Covered Fiber Laser Metal Cutting Machine

## SPECIFICATION

Model	OPTIMA XFC 5050	OPTIMA XFC 13090
Working Area	500*500mm (20"x20")	1300*900mm (51"x35")
Laser Power	500-2000 W	
Laser Type	100,000 Hours Life span Air/ Water cooled Fiber Laser, 1060 nm	
Laser Head	RAYTOOLS with automatic real time distance adjustment	
Processing Speed	0-400 mm/s	
Feed through	Front Max Thickness 25 mm (1")	
Communication (File Transfer)	USB, Ethernet	
Min. Cutting Kerf	0.1 mm	
Cutting Depth	0.2 - 20 mm	
Positioning	±0.04mm Accuracy with Beam Combiner Red Dot Positioning System	
Controlling Software	CypCut with Nesting Function, Focus control & Edge search Function (Win XP/7/8/10 Compatible) with Power Interruption Restore Function	
Compatible Graphic Format	DXF, PLT, BMP, DWG, AI	
Compatible Software	CORELDRAW, AUTOCAD	
Table	Motorized with 200 mm (10") travel range with Removable Aluminum blade Table Top	
Drive System	High-precision Servo Motor with Ball Screw	
Standard Accessories	450 CFM Exhaust Fan, Water Chiller unit, CypCut software and drivers, Operation & Maintenance Manual, Tutorial Videos	
Power Supply	230V, 3 Phase 60HZ OR 380V, 3 phase 50 HZ	
Operating Condition	Temperature: 10-40 °C, Humidity: 5-95%	
Applicable materials	Stainless Steel, Carbon Steel, Brass, Copper, Aluminum, Gold, Silver, Titanium	



## SAMPLES



LOGILASE  
TECHNOLOGIES, INC.

114 Bowes Road, Unit#11, Concord, ON, L4K 1J8, Tel: 416 804 7870, Toll free/Fax: 1 888 686 7485, email: info@logilase.com