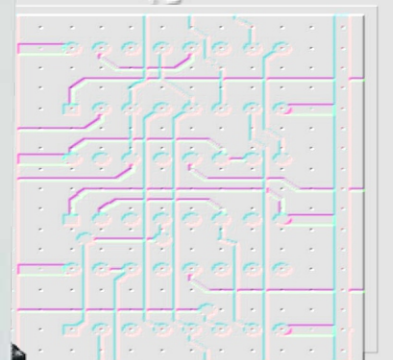
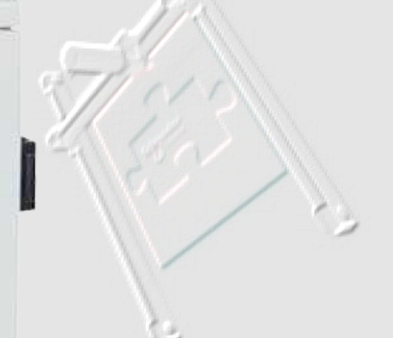
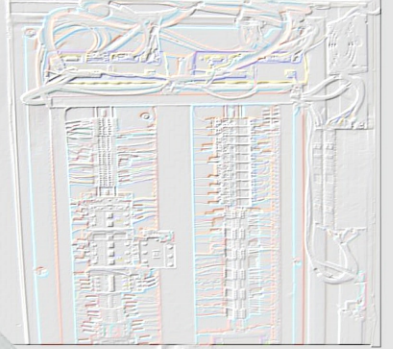
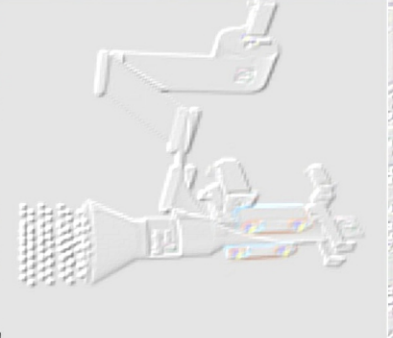
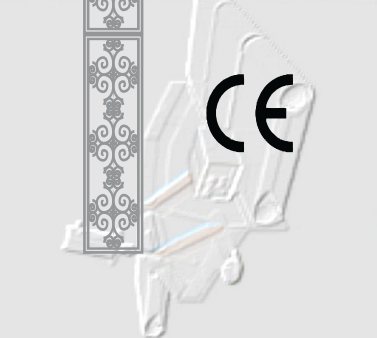
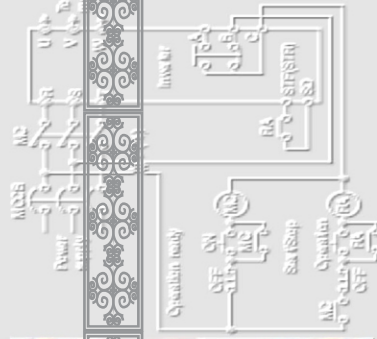


LOGILASE FI

# LOGILASE FILTERS

## LOGILASE FF500

### MIDSIZE FUME & SMOKE EXTRACTOR AND FILTERING UNIT



# LOGILASE FF500

## MIDSIZE FUME & SMOKE EXTRACTOR AND FILTERING UNIT

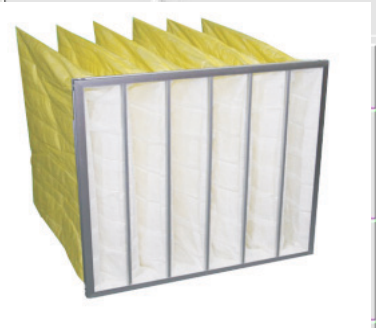


### SPECIFICATION

Model	FF 500
Air Flow / Power consumption	500 m3/hour / 350 W, 110 V 60 Hz
Maximum Laser Working area	600x400 mm
Machine Dimension	450x450x880 mm
Machine Weight	56 kg NW
Air Pressure	3000 Pa
Filtration Rate	99.7 % @ 3 µm
Noise Rate	<70 dBA
Inlet size	100 mm with 2000 mm Flexible arm
Filtering stages	1- G3 Primary Filter 2- F5 Pre-Filter Dust Bag 3- H13 HEPA Filter 4- Activated Carbon Filter



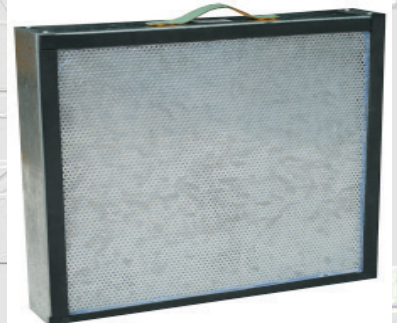
G4 Primary Filter



F8 Pre Filter



H13 HEPA Filter



Activated Carbon

